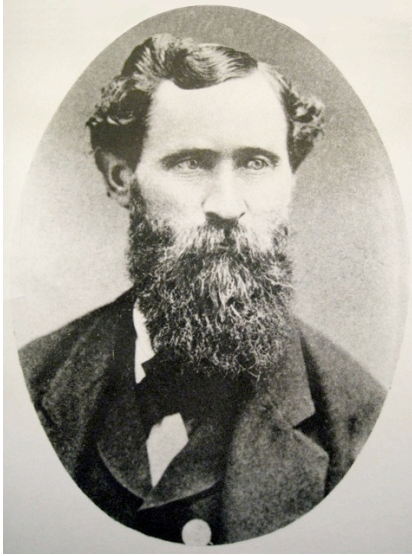


DAVIS GENEALOGY CLUB

JUNE



PIONEER ASA WARREN MORRIS

Yolo Pioneers on a Gold Rush Wagon Train

Speakers: Bernard and Lynne Gough

Please join us as we hear the rousing stories of Lynne Gough's pioneering family in this well-received program researched and created by Lynne, and given by Lynne's husband, Bernard Gough. It was shown in Yolo County for the first time last year at Mary's Chapel, where Lynne's journey started when she first discovered curious family gravestones there. This much-requested encore presentation will feature an introduction to the California Gold Rush with music, photographs, a short video illustrating the journey across the frontier, maps of the route taken by Gough's family, and profiles of four pioneers who settled in Yolo County, California. Lynne will bring along diaries penned during the 150-day journey from Pennsylvania to California by both the wagon captain, Dr. George Willis Read, and a cook for one of the wagons, William Heaton Black, bring the difficult and dangerous cross-county trek to life.

Lynne Gough, now of Sacramento, was born in Woodland and is a fourth-generation Californian of the Morris and Eddy families of Yolo County. Lynne has recently written a book, soon to be published, for both young readers and adults that tells the colorful story of her world famous dairyman ancestor.

TUESDAY, JUNE 16TH • 1 PM

DAVIS SENIOR CENTER • 646 A STREET • DAVIS

*THE DAVIS GENEALOGY CLUB LIBRARY AND MEETINGS ARE OPEN TO
THE PUBLIC AND GUESTS ARE WELCOME. PLEASE VISIT DAVISGENEALOGY.ORG*

